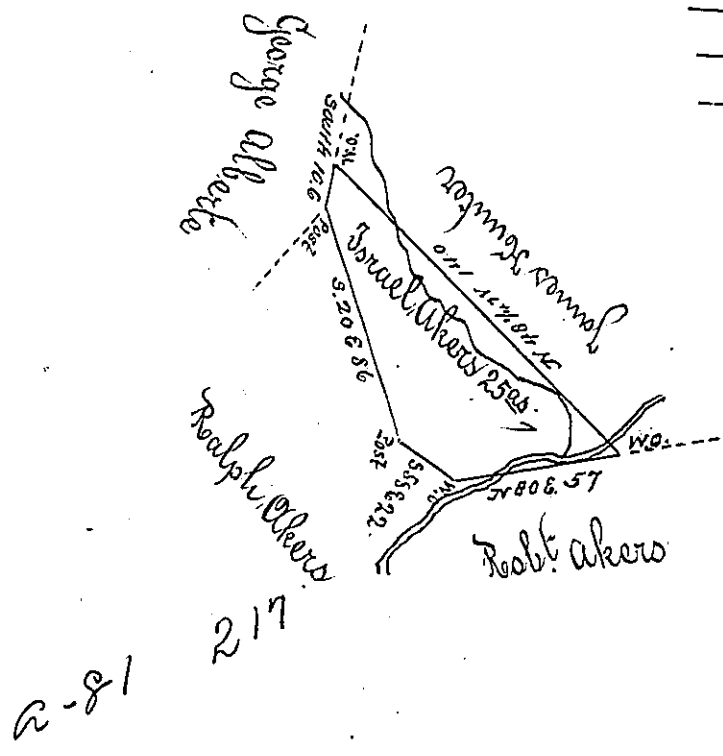
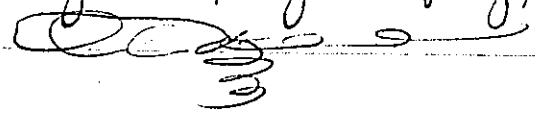
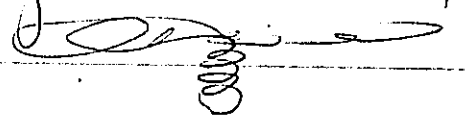


	N	S	E	W
5208 56 Post		80.8	29.4	
5588 22 7/10		11.7	18.7	
7808 57 7/10	9.9	-	56.1	
748 1/4 W 140 1/10	93.2	-	-	10.4 2
South 106		106		

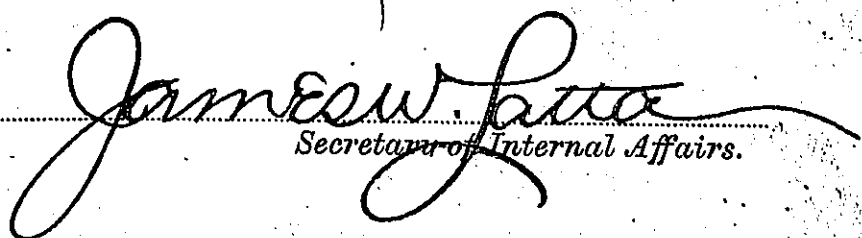


Situate on the waters of Brush Creek in Providence Township Bedford County containing 25^{ac} & allcs surveyed for Israhel Akers the 19th day of March 1855 on warrant Dated 28th of February 1833 for 35^{ac}

To Jacob Spangler Esq. D.C.


John Bennett D.V.


IN TESTIMONY that the above is a copy of the original remaining on file in the Department of Internal Affairs of Pennsylvania, made conformably to an Act of Assembly approved the 16th day of February, 1833, I have hereunto set my Hand and caused the Seal of said Department to be affixed at Harrisburg, this second day of September 1902.


 Secretary of Internal Affairs.